

How cyber resilient are your clients?

An executive or business owner today has a lot to manage when it comes to cyber security. There is pressure to ensure employee and customer personal details are safe, the company's intellectual property secure, and evolving legislation and regulatory requirements to manage. And the threat is real. In the 2021 Hiscox Cyber Readiness Report, cyber attacks increased from 38% to 43%, and one-in-six firms targeted said a cyber attack had threatened the viability of their business.

Consistent standards across all areas of security are essential if the hackers are not going find a way in. The Hiscox Cyber Maturity Model is a free, online maturity assessment that allows a company to self-assess their cyber maturity and compare against other companies by size, industry, and country. Give your clients a new perspective on how they measure and manage their cyber resilience.

What is a cyber security maturity assessment?

A cyber security maturity assessment measures a company's performance against best practices for cyber security. The more mature a company is, the better equipped its practices are at preventing a cyber attack or minimizing the impact.

"As an ex-CTO I was always asking 'what are our competitors doing?' and 'how do we compare?' This year's Hiscox Cyber Readiness Report, includes an interactive maturity model that answers those questions."

– Gareth Wharton, Cyber CEO, Hiscox

Benefits to your client

- Provide current view of cyber security performance.
- Benchmark against others by size, sector, and/or geography.
- Illustrate gaps and opportunities to upper management.
- Review best practices and how to balance cyber security controls.
- Know where to invest or focus when building strategy roadmap.

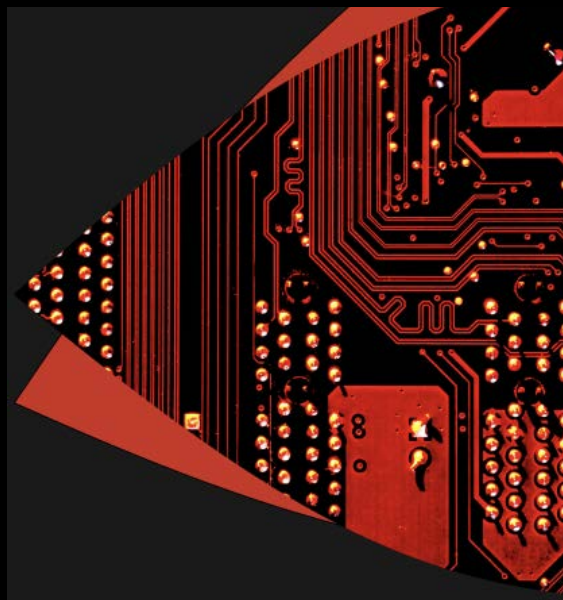
Benefits to you

- Look like an expert by bringing awareness to your client's level of cyber security.
- Provide additional value to clients at no additional cost.
- Show how good a client's cyber security is when looking for coverage, or how it's progressed at renewal.

Why use the Hiscox Cyber Maturity Model to assess your client's risk?

The Hiscox Cyber Maturity Model is easy to use, free, and built using industry standards like COBIT® measurement framework and SABSA® security architecture. It measures a business's strengths in six key cyber security areas across people, process and technology, providing a two dimensional view of cyber security.

Designed to be an interactive model, a business can check and compare its maturity to other companies by size sector, and/or geography. The model then illustrates what cyber experts are doing in order to help a company further develop its cyber resilience.



How does the model work?

Each question is designed to quantify a firm's capabilities across six operational areas within cyber security – business resilience, cryptography, identity and access, security information, threat and vulnerability, and trust management. These operational areas are then viewed in relation to people, processes, and technology.

The combined view across the two dimensions provides a composite picture of cyber maturity. The scoring system marks firms out of five, and any score over four qualifies the firm as a 'cyber expert'. Between 2.5 and 4, they qualify as 'cyber intermediates'. Below 2.5, they rank as 'cyber novices'.

Get started today!
Visit www.hiscoxgroup.com/cyber-maturity

Only have a minute?

Use our quick Hiscox Cyber Health Check tool. Answer just seven cyber security-related questions and see if your client scores low, medium, or high risk. Use it to start a discussion around the importance of good cyber security practices.

Visit your local Hiscox cyber page to learn more.